

Highlights:

- 900 Watt program power
- Low frequency extension down to 47Hz without processing
- 128 dB of Max SPL (continuous)
- Architecturally discreet and compact design
- Immersive sound experience
- Custom high-excursion driver for superior performance
- Flexible ceiling & wall mount option
- Compared to ARCHI10: twice the power for 1,5 x the value
- Push-Pull design eliminates 2nd harmonic distortion for a vibration-free surrounding
- Vandalism-proof grill design for enhanced protection and durability

Product information:

The ARCHI Series combines architectural elegance with groundbreaking audio performance. Designed for bars, restaurants, hospitality, and residential applications, these compact subwoofers deliver immersive sound with minimal visual impact.

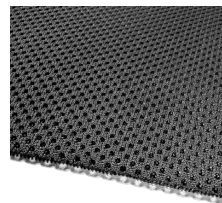
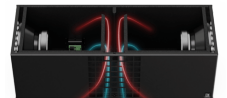
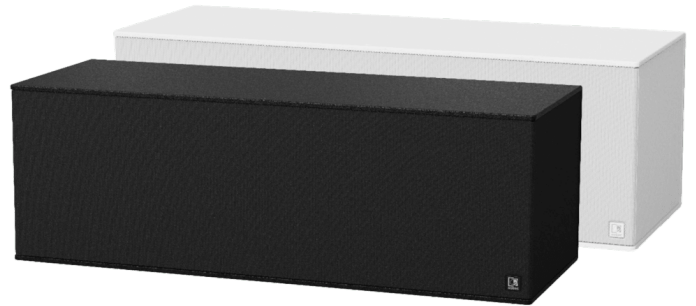
Featuring innovations like AcoustiMesh for acoustic neutrality, AeroVent for noise-free bass performance, and weatherproof capabilities, the ARCHI Series excels indoors and outdoors. With low-frequency extensions down to 26Hz, flexible mounting options, and durable materials, the ARCHI Series redefines low-frequency fidelity, offering powerful, precise bass in a discreet, stylish design.

ARCHI210: Twice the power for 1,5 times the value

The ARCHI210 takes performance to the next level with its dual-driver bass reflex design, engineered to deliver immersive, distortion-free bass. The AcoustiMesh acoustic neutral 3D fabric ensures sound clarity, while the polyurea-coated 12/24mm multiply plywood enclosure offers durability and stability. Equipped with ultra-vented gap cooling, the ARCHI210 minimizes power compression, ensuring consistent performance even at high power levels. With the added flexibility to switch nominal impedance between 4 and 16 ohms, the ARCHI210 adapts seamlessly to various system configurations. Its weatherproof treated cone enhances durability, making it a robust choice for long-term use in high-demand environments. Designed for versatility, this model excels in delivering rich, powerful bass with precision and control.

Applications:

- Bars & Restaurants
- Hotels
- Residential



Impedance:

Ω 4 Ohm Ω 16 Ohm

Usage:



Indoor

System specifications:

Speaker type		2x10" Bass reflex cabinet
Peak power handling		1800 W
Program power handling		900 W
Continuous power (AES)		450 W
Impedance		4 Ω / 16 Ω
Max SPL (Continuous)		128 dB
Sensitivity (1W/1m)		101 dB
Frequency	Response (- 3 dB)	65 Hz - 120 Hz
	Range (-10 dB)	47 Hz - 200 Hz
Bass port tuning frequency		51 Hz
Connectors		Terminal block with linkthrough
Drivers		2x10" Ferrite with low-loss suspension and 1.5" 4-layer wound voice coil

Product Features:

Dimensions	868 x 290 x 318 mm (W x H x D) (excluding feet)	
	868 x 302 x 318 mm (W x H x D) (including feet)	
Weight	23.1 kg	
Operating temperature	-20 °C ~ 70 °C	
Construction	15 mm MDF with multi-layer Polyurea coating	
Front finish	AcoustiMesh	
Colours	Black & White	

Variants:

- ARCHI210/B - Black version
- ARCHI210/W - White version

Shipping & Ordering:

Packaging	Cardboard box
Shipping weight & volume	26 kg - 0.12 Cbm

Architects' and Engineers' Specifications:

The architectural subwoofer shall incorporate two custom high-excursion 10" ferrite transducer with a low-loss suspension and a 1.5" 4-layer wound voice coil, ensuring powerful and precise low-frequency reproduction and immersive sound experience. The driver shall be housed in a bass reflex enclosure with push-pull design eliminates 2nd harmonic distortion for a vibration-free surrounding. The enclosure shall have a vandalism-proof grill design for enhanced protection and durability.

The enclosure shall feature an architecturally discreet and compact design, constructed from 15 mm MDF with multi-layer Polyurea coating. The front shall be finished with AcoustiMesh, an acoustically transparent 3D fabric, ensuring optimal sound transmission while fitting and blending seamlessly into any space.

The system shall have a continuous power (AES) handling of 450 Watts, program power handling of 900 Watts and a peak power handling of 1800 Watts, with a configurable nominal impedance of 4 Ohms or 16 Ohms. The frequency response (-10 dB) shall range from 47 Hz to 200 Hz, without processing. The sensitivity shall be 101 dB, measured with an input signal of 1 Watt at 1 meter, while the maximum continuous sound pressure level (SPL) shall reach 128 db.

The enclosure shall have integrated mounting points, allowing flexible installation in various orientations. Input connections shall be made terminal block. The nominal impedance shall be configured on the terminal block with the provided jumper sockets.

The subwoofer's dimensions shall be 302 mm in height, 868 mm in width, and 318 mm in depth including feet, while the weight shall not exceed 23.1 kg. The enclosure shall be available in both black and white finishes to blend seamlessly into the architectural setting.