

CASY285GI

CASY 2 space with German schuko outlet IP54

Highlights:

- 1.5 mm thick cold rolled steel frame
- Structured and scratch resistant black powder coating
- Compatible with any CASY chassis
- Solderless connections
- Flexible system for system integration & connectivity

Product information:

The CASY285GI is fitted with a type F German power socket (IP54) on the front side, that leads to a lever actuated splicing connector on the back. This flexible structure for system integration & connectivity can easily be implemented in a wide variety of CASY chassis.

Please look for your local regulation to know which type of connector is allowed in your territory.

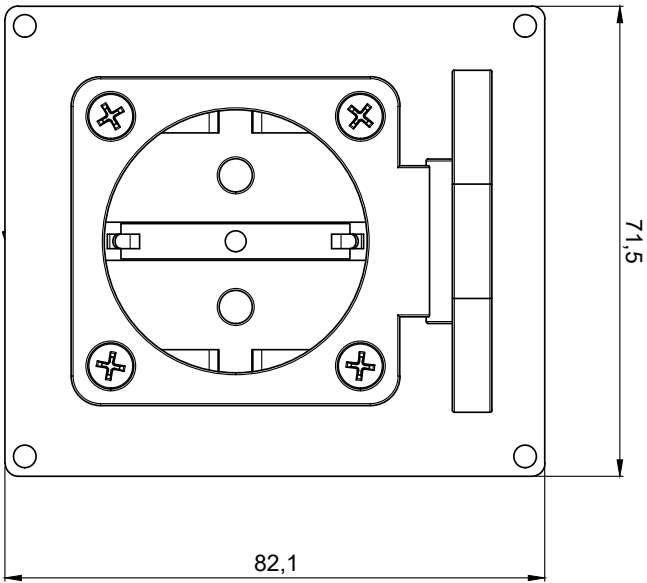



Product Features:

Dimensions		71.5 x 82.1 mm (W x H)
Weight		0.124 kg
Module	Space	2
Connection		German socket (IP54) Female type F (CEE 7/4) to lever actuated splicing connector

Variants:

- CASY285GI/B - Black version



 professional stands and racks		CASY285GI		Product description: CASY 2 SPACE WITH GERMAN SCHUKO OUTLET IP54	
Weight:	124 g	Outer dimensions: (w x h x d)	71,5 x 82,1 x 39	Unit height:	2 HE