



FLOOR-TO-WALL MOUNTING SYSTEM
WITH WING BOARDS

Avtek PylonLift Wings

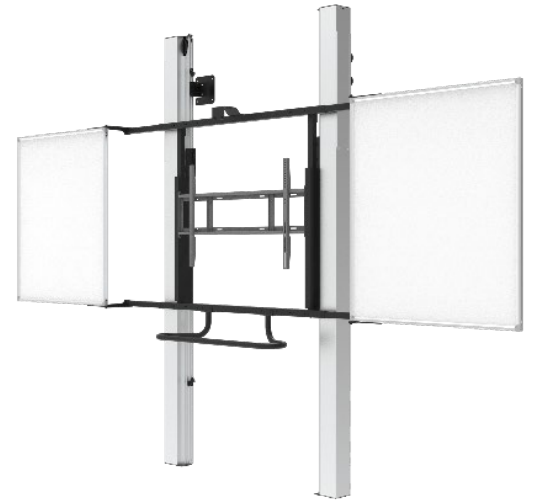


Avtek

Inspire | Engage | Lead

A large screen doesn't have to be difficult to use.

Avtek PylonLift Wings is a floor-to-wall mounting system with smooth, manual height adjustment based on a counterweight mechanism – precise positioning of the screen at any height takes just seconds and requires no effort. The wing versions (86 and 75) feature side-opening boards with a durable **PolyVision®** surface, providing extra writing space, and when closed, they protect the screen and give the entire setup a neat appearance. The basic version offers a maximum load capacity of up to 120 kg. The robust construction, mounted to both the wall and floor, ensures stability and safety even with daily, intensive use – an ideal solution for classrooms, kindergartens and training spaces.

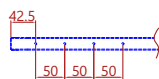
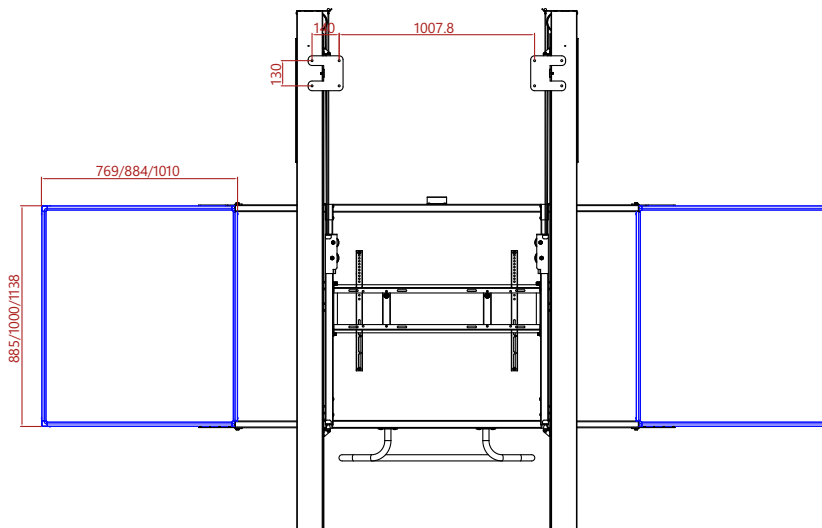
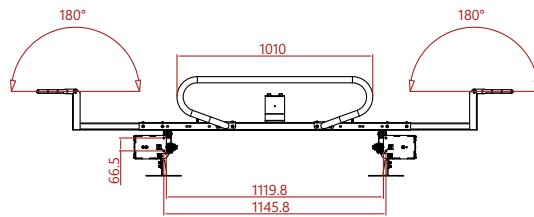
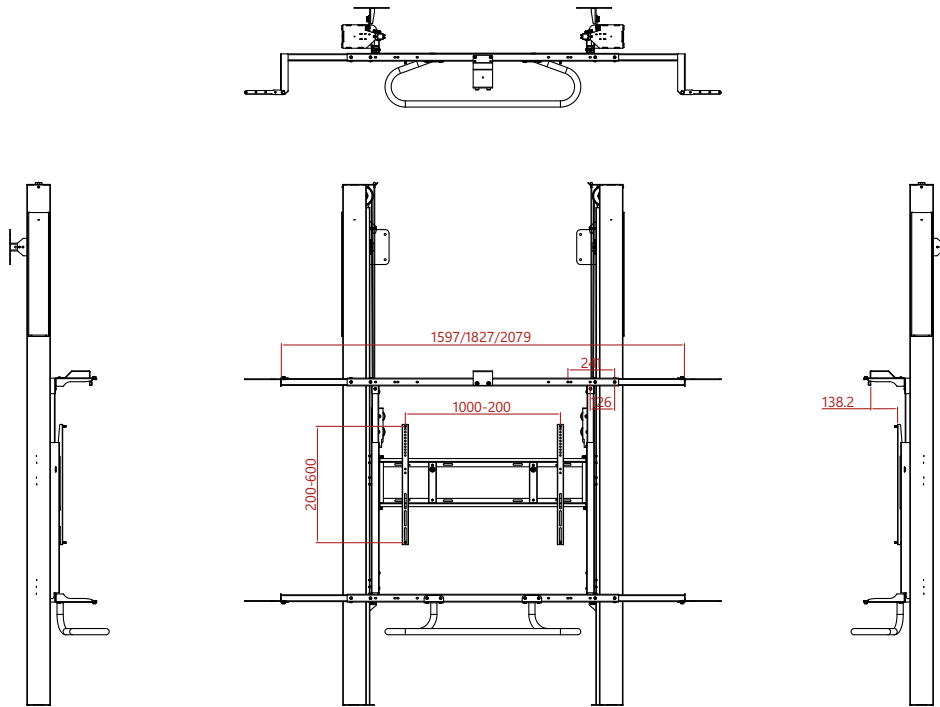


www.avtek.com
ID 1111314299



MODEL	Avtek PylonLift Wings	Avtek PylonLift Wings 75	Avtek PylonLift Wings 86
KEY FEATURES			
Recommended size	65" – 98"	65" – 75"	86"
Maximum load	120 kg	90 kg	
Mounting type	Floor-to-wall		
Board mechanism	-	Side-opening wing boards	
Board technology	-	PolyVision®	
Colour	Pylons – aluminium, frame – black		
Height adjustment	Manual, counterweight-based		
Adjustment range	950 mm		
VESA	400 × 200 – 1000 × 600 mm		
Minimum product dimensions	1456 × 2700 × 495 mm	1827 × 2700 × 495 mm	2079 × 2700 × 495 mm
Maximum product dimensions	1456 × 2700 × 513 mm	2711 × 2700 × 513 mm	3089 × 2700 × 513 mm
Operating conditions	For indoor use		
Warranty	3 years		
PACKAGING			
	NET WEIGHT	GROSS WEIGHT	PACKAGE DIMENSIONS
PylonLift Wings BOX 1 (pylons)	41.5 kg	46.3 kg	2800 × 400 × 260 mm
PylonLift Wings BOX 2 (frame)	16.9 kg	20.7 kg	1500 × 330 × 230 mm
PylonLift Wings BOX 3 (counterweight 1)	12.5 kg	12.7 kg	275 × 105 × 105 mm
PylonLift Wings BOX 4 (counterweight 2)	12.1 kg	12.1 kg	275 × 105 × 105 mm
WB 75 (75" boards)*	5.9 kg	14.1 kg	1055 × 950 × 60 mm
WB 86 (86" boards)*	8 kg	18.8 kg	1190 × 1065 × 60 mm

* Boards are packed 2 pcs. per package.



The installation holes of the whiteboard

